



ENVIRONMENT PROTECTION ACT 1970
SECTION 19B

WORKS APPROVAL

LINKING MELBOURNE AUTHORITY

Holder of

Works Approval: 1001390

Issued:

ABN: 54 293 070 013

Registered Address: LEVEL 20,
180 LONSDALE STREET,
MELBOURNE VIC 3000

Premises Address: EAST WEST LINK TUNNELS
ROYAL PARK TO CLIFTON HILL VIC 3068

Scheduled Categories: L03 Tunnel Ventilation Systems

Description: This approval allows the construction of the East West Link road tunnels between Royal Park and Clifton Hill, and the associated tunnel ventilation system.

.....
Hon. Matthew Guy
Minister for Planning

Issued under the *Major Transport Projects Facilitation Act 2009*, Section 77
and the *Environment Protection Act 1970*, Section 19B

PREAMBLE

Works Approvals

Why works approvals are issued: Section 19A of the *Environment Protection Act 1970* (“the EP Act”) requires the occupier of a “scheduled premises” to obtain works approval to construct or install plant and equipment in order to discharge, handle, treat or dispose of waste to the environment. These types of premises are defined in the *Environment Protection (Scheduled Premises and Exemptions) Regulations 2007* (“the Regulations”).

The *Major Transport Projects Facilitation Act 2009* (“the MTPF Act”) provides that a Works Approval may be issued by the Planning Minister, rather than by EPA, for projects assessed under that Act.

When works approvals are issued: A works approval is issued when the responsible authority is satisfied that an applicant has put in place measures to protect the environment. Works approvals allow construction of works to occur and set control measures to minimise a site’s environmental risk. A works approval can be amended in response to changes in standards and site activities. Works approval holders must submit reports if required by a condition of the approval.

Works Approval information and obligations

For the purposes of this works approval “You” means the works approval holder identified on the first page of this works approval at the “premises” identified on the first page and represented in Schedule 1.

Compliance: At all times, you must comply with the EP Act and all policies and regulations administered by EPA, including the conditions of the works approval. Strict penalties apply for non-compliance with any part of your works approval.

Works Approval structure

Structure: Your works approval has multiple parts:

- Works conditions - setting out requirements for construction or installation;
- Schedule 1A - locality plan of your premises;
- Schedule 1B - plan of premises.

CONDITIONS

General Conditions

- WA_G1 Subject to the following conditions, this approval allows the construction of the following works and associated equipment - the East West Link road tunnels and associated ventilation systems and structures (including the ventilation stacks).
- WA_G2 The works must be constructed in accordance with the application accepted on 31 October 2013 as augmented or amended by additional information supplied between 1 November 2013 and 15 April 2014 ("the application") except that, in the event of any inconsistency arising between the application and the conditions of this approval, the conditions of this approval shall apply.
- WA_G4 This approval expires:
(a) on the issue or amendment of a licence relating to all works covered by this approval;
(b) when EPA advises in writing that all works covered by this approval have been satisfactorily completed and no licence is required; or
(c) two years from the date of issue unless the works have been commenced by that date to the satisfaction of EPA.

Works Conditions

- WA_W1 Before commencing construction of the following components of the works, you must provide to EPA a report or reports with the plans and specifications of those components, including details of:
(a) the tunnel ventilation system and exhaust stacks, showing measures to be taken to ensure compliance with State environment protection policy (Air Quality Management) and ensure impacts are equivalent to or less than the Reference Project assessed for this Works Approval;
(b) the tunnel ventilation system, showing measures to be taken to ensure that the tunnel can achieve zero portal emissions during operation;
(c) the tunnel ventilation and lighting systems, showing compliance with best practice requirements of the Protocol for Environmental Management "Greenhouse Gas Emissions and Energy Efficiency in Industry"; and
(d) the tunnel ventilation system, showing measures to be taken to ensure compliance with the State environment protection policy (Control of Noise from Commerce, Industry and Trade) No. N-1.
- WA_W2 You must not commence construction of those parts of the works for which reports are required by condition WA_W1 until written EPA approval of those reports has been received.
- WA_W3 Where any reports specified in condition WA_W1 and approved by EPA differ from the application, the works must be constructed in accordance with those approved reports.
- WA_W4 You must notify EPA when the construction of the works covered by this approval has been commenced.

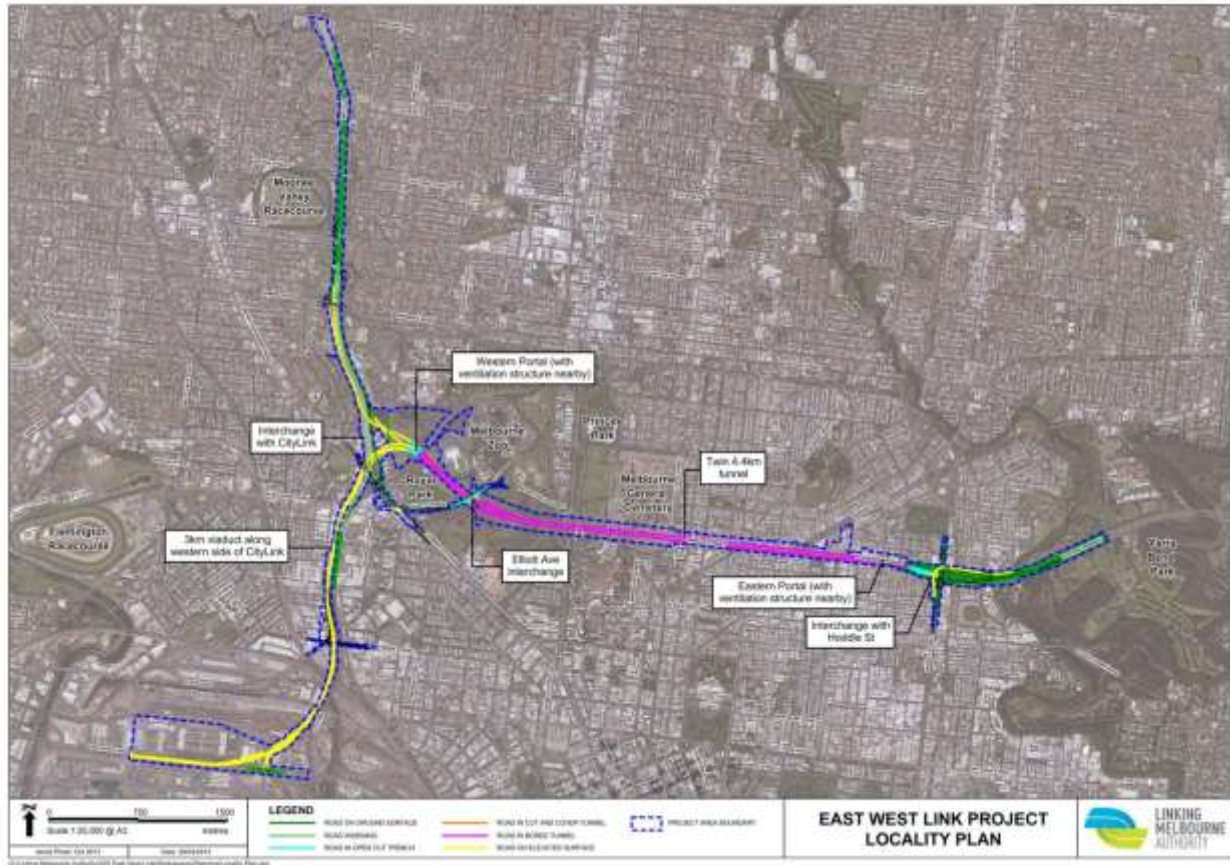
- WA_W5 You must notify EPA when the construction of the works covered by this approval has been completed.
- WA_W7 You must not commission or operate the works without the written approval of EPA.
- WA_W12.1 You must install all exhaust stacks so that provisions for sampling are included in accordance with EPA Publication 440.1 "A guide to the Sampling and Analysis of Air Emissions and Air Quality", or as approved by EPA.

Reporting Conditions

- WA_R1 Before the commencement of any commissioning, you must provide to EPA a commissioning plan that includes:
- (a) a monitoring program for in-tunnel air quality and ventilation stack emissions;
 - (b) a monitoring program for ambient air quality; and
 - (c) a monitoring program for noise impacts.
- WA_R5 You must not commence operation of the works until written EPA approval of the plan required by condition WA_R1 has been received.



SCHEDULE 1A – LOCALITY PLAN



Works Approval:	0
Company Name:	LINKING MELBOURNE AUTHORITY
ABN:	54 293 070 013
Premises Address:	EAST WEST LINK TUNNELS, ROYAL PARK TO CLIFTON HILL VIC 3068
Issued:	
<p>Before relying on the information in this map, users should carefully evaluate its accuracy, currency, completeness and relevance for their purposes, and should obtain any appropriate professional advice relevant to their particular circumstances.</p>	



SCHEDULE 1B – PREMISES PLAN



Works Approval:	0
Company Name:	LINKING MELBOURNE AUTHORITY
ABN:	54 293 070 013
Premises Address:	EAST WEST LINK TUNNELS, ROYAL PARK TO CLIFTON HILL VIC 3068
Issued:	
<p>Before relying on the information in this map, users should carefully evaluate its accuracy, currency, completeness and relevance for their purposes, and should obtain any appropriate professional advice relevant to their particular circumstances.</p>	